



MicroAMP Meter

For DC Current Measurement

Easy to Use. Easy to Read.

0-200uA DC input

0.1% Accuracy

40
Segment curved
bar graph display

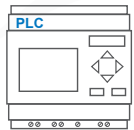
Programmable backlight
color to alert user



Programmable 4 digit
star-burst display. Custom
messages & annunciators



NEW 10 alarm set points



2 digital outputs
1 analog output
NEW Digital Output Delays

Less than
53mm deep

WIDE
viewing angle

Available in either



Programmable
scale

Combined digital and
bar graph display
NEW 20 point non-
linearization scaling



USB port for custom user settings
via the **free easy-to-use software**

16 Position switch for
selecting standard
configurations



Full 4 digit readout for accuracy

Featuring an acclaimed easy-to-read display and a high resolution input, the MicroAMP Meter is the ideal meter for applications where accurate DC current measurement is required.

With an accurate 0-200uA DC input, the APM MicroAMP is ideal for DC current measurement applications in marine, leisure, material handling, and industrial applications such as power supplies, load banks and charging systems.

The programmable scale and custom annunciators mean users can tailor the meter to display their critical parameters exactly how they want. Dynamic backlighting, in conjunction with setpoints, means operators are visually alerted when a parameter is out of range while the two outputs can be used to connect the APM to other systems in the process, meaning the MicroAMP is much more than just a display.

Key Features

Unique Display

- 40 segment bar graph display
- Large 4-digit display
- Separate Starburst display area for annunciators, custom messages and alarm information
- Dynamic backlight color

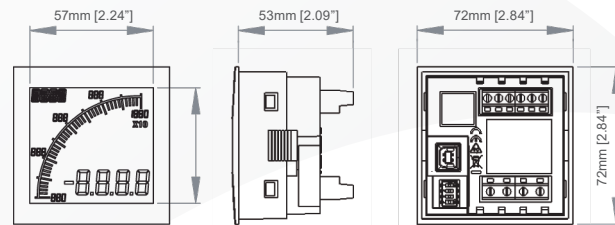
Visibility

- User-adjustable backlight brightness and colour
- Large display
- Wide viewing angle (horizontal and vertical)
- Custom annunciators

Programmable

- Scale (offset, gain and linear) and Range (min and max)
- User selectable backlight color and intensity
- ***NEW*** 20 point non-linearization scaling for non-linear sensors e.g. thermocouples and pressure transducers
- ***NEW*** Ten independent alarm set-points
- ***NEW*** Configurable digital output delays (control the time output stays open/closed - .5 seconds – 120 seconds)

Dimensions:



Panel cutout: 68mm x 68mm [2.68" x 2.68"] as per DIN43700/IEC61554

INPUT

Range	0-200uA DC
Impedance	4700Ω
Accuracy	0.01% of input or 0.5uA whichever is greater

ENVIRONMENTAL

Temperature - operating	-10 to +60°C
Temperature - storage	-40 to +70°C
IP rating (from the front)	IP65
NEMA rating (from the front)	Type 4 & Type 12

POWER SUPPLY

Nominal Input	12-24 VDC
---------------	-----------

DISPLAY

Number of digits	4
Digit height	12mm [0.47"]
Number of message characters	4
Backlight colors	Red, Green, White
LCD display	Positive or Negative

OUTPUTS

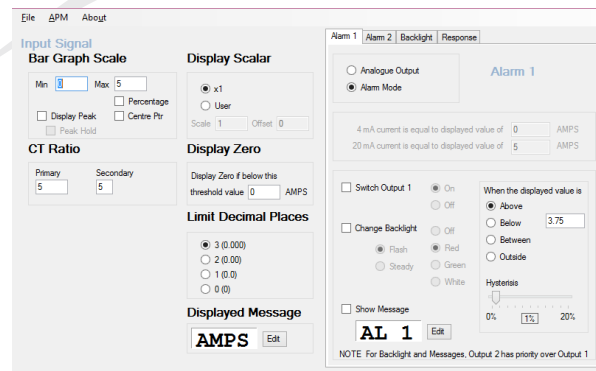
Max voltage	34V
Max current	500mA
Analog output	4-20mA

CERTIFICATION

UL, cUL, CE

Easy To Use Software

Just plug into any USB port on your PC, run the freely available APM Configurator application and you're off. No drivers required.



Part Numbers:

APM-MICRO-APO	APM MicroAMP Meter, Postive LCD with outputs
APM-MICRO-ANO	APM MicroAMP Meter, Negative LCD with outputs
022128-01	USB Cable

By Request: Modbus® connectivity

APM-MICRO-APS	APM MicroAMP Meter, Postive LCD with Modbus®
APM-MICRO-ANS	APM MicroAMP Meter, Negative LCD with Modbus®

Full specifications available online www.trumeter.com/apm



Trumeter (The Americas)
 6601 Lyons Rd, Suite H-7
 Coconut Creek, Florida
 FL 33073,
 USA
 Tel: +1 954 725 6699
 Email: sales.usa@trumeter.com

Trumeter (Europe)
 Trumeter
 Pilot Mill, Alfred Street
 Bury, Lancashire
 BL9 9EF
 Tel: +44 161 674 0960
 Email: sales.uk@trumeter.com

Innovative Design Technologies Sdn. Bhd
 Lot 5881, Lorong Iks Bukit Minyak 1
 Taman Perindustrian Iks, 14000 Bukit Tengah
 Penang, Malaysia
 Web: www.idtworld.com
 Tel: + 604 5015700
 Email: sales.my@idtworld.com